

Reading Municipal Light Department

6TH ANNUAL

HIGH SCHOOL ART CONTEST

2022-2023 Winners

Sustainably



Renewable energy sources are being created quickly.

Chris Ferreira
Senior, Reading Memorial High School



New Inventions



This drawing shows how discoveries of electricity and energy pave the way for new technology and advancements. The bright colors represent the excitement and new opportunities that these advancements provide.

*Astrid Puff
Junior, Reading Memorial High School*



A Revolution for the Future Generations



The submission displays Benjamin Franklin's famous experiment involving lightning and a kite. This experiment provided more insight into electricity and different properties of lightning. This memorable test has provided a foundation for scientists and encompasses the "trailblazing" theme as a result.

*Kurt Rothermund
Junior, Lynnfield High School*





Trail Blazing Begins But Never Ends...And That's a Good Thing!

All trail blazing has a beginning! From the simple farms that produce products using wind and solar to the discoveries made through space exploration. Trail blazing is essential to continue with the progression of life on earth...maybe we'll even shop at a Marget in space someday!

Tim Sullivan

Sophomore, Lynnfield High School

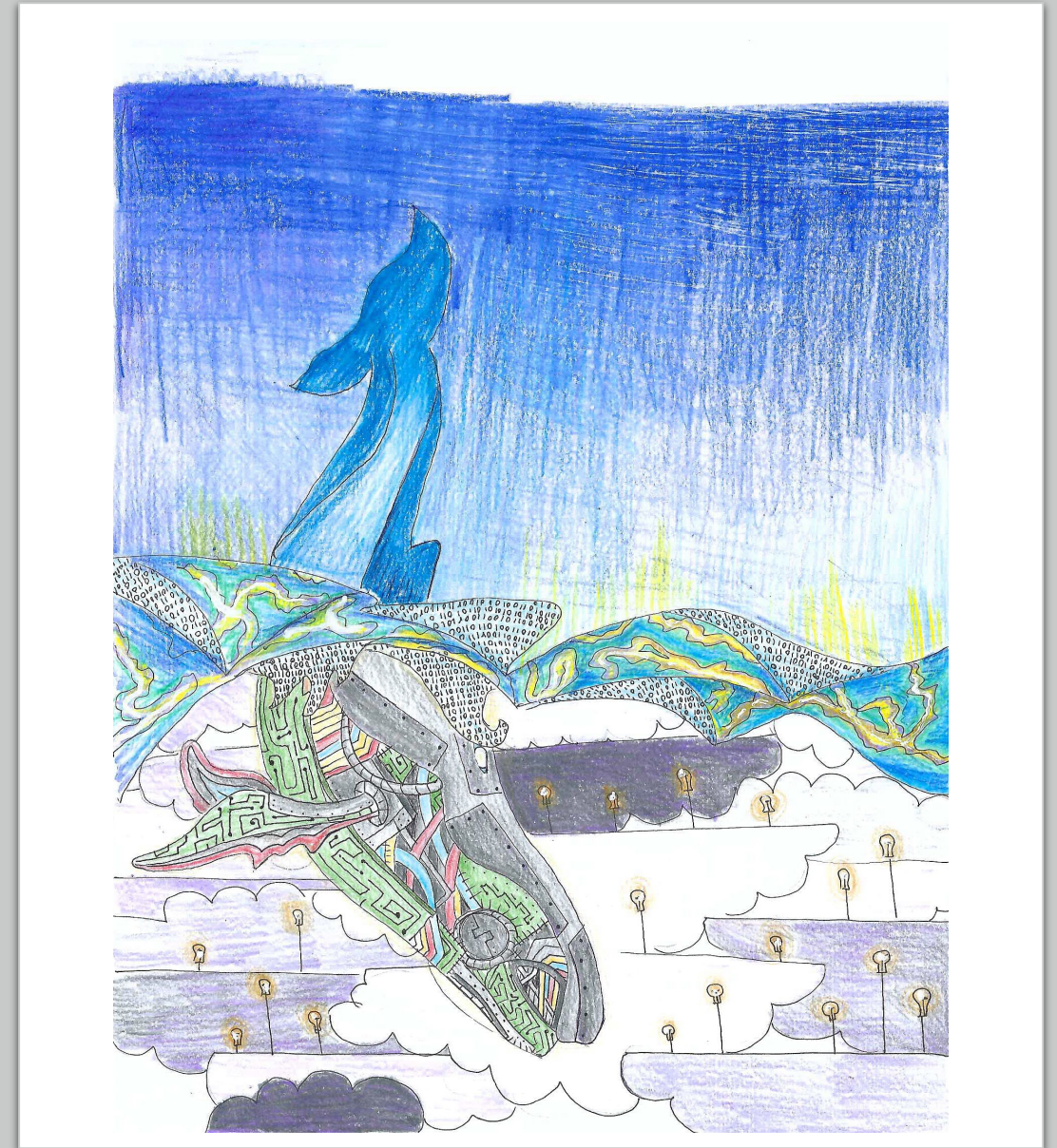


Nosedive



The illustration represents the transition of the world from old fashioned nature to technology. The whale represents society moving forward

*Piper Kirwin
Junior, North Reading High School*



Dare to Stray from the Herd and Forge Your Own Path Ahead



For my submission, I have taken a photograph with my sister acting as the “trailblazer”, treading a new path and being different. I have used the light and technology of my projector to create the image

Lauryn Hurley

Senior, Wilmington High School



Save Planet

This artwork displays a group of people protesting. They are bringing up solar panels and wind turbines as options. All in a effort to save the planet. Also, I made it so the more bright and colorful the individual is, the more educated they are on the subject.

Kylee Hutchinson
Senior, Wilmington High School



Creating a Path in the Darkness

The car is driving through the night and instead of taking the well light road that most people would follow, the car goes off onto a dirt path lighting its own way on the trail. The car creates its own path and uses its own lights to show that people can go where they want to and they can do it without relying on others.

Mark Malley

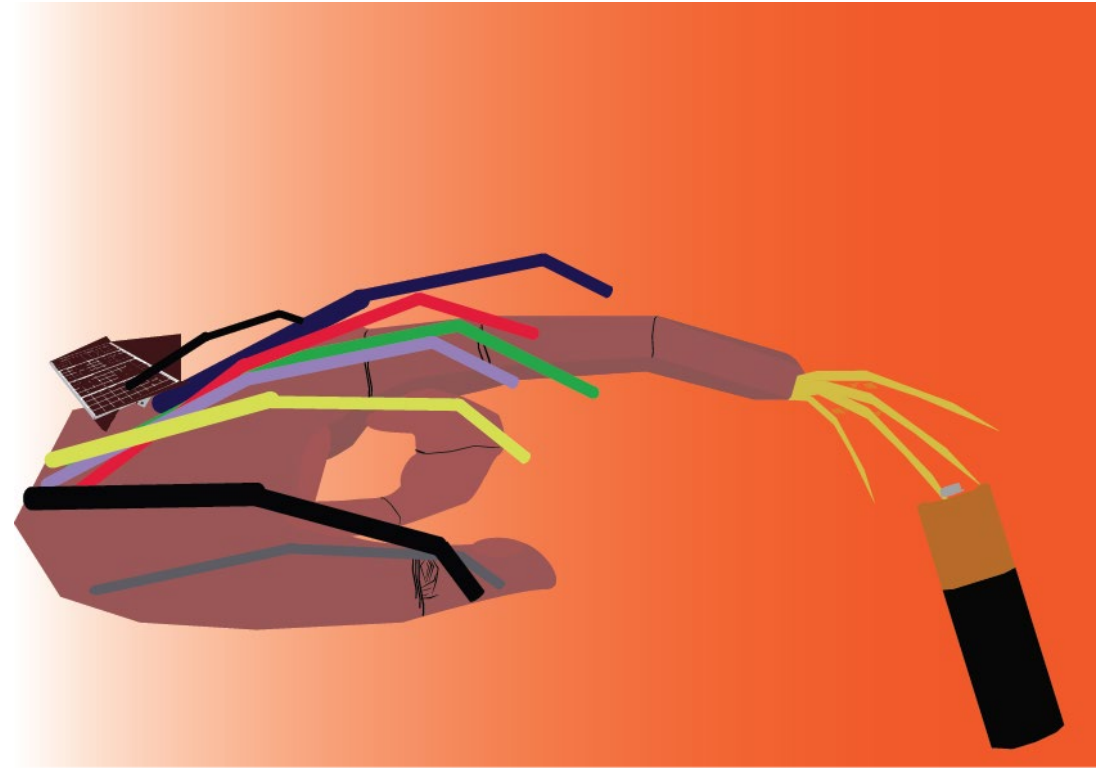
Junior, Reading Memorial High School



Harnessing the Power of Solar

A robotic hand symbolizing RMLD and the work they do to provide power to Reading, North Reading, Wilmington, and Lynnfield. Solar power being one of the ways to do so. The energy that's being absorbed by the solar panels could be stored. Utilized later to power all sorts of electrical devices, including your home!

*Bonhong Sreng
Junior, Wilmington High School*



The Future of Energy

Fossil fuels such as coal, oil, and natural gas are finite and damaging to the environment. By harnessing energy from renewable sources such as the Sun, wind, and waters, the world's electric grids can continue to thrive for as long as our planet keeps turning. Finding new ways to efficiently harness and store renewable energy is an important step to ensuring a brighter future for everyone.

Emma Galbraith

Senior, North Reading High School



A Change in Direction

My illustration represents a change in electricity. As our society becomes more advanced, many companies, including RMLD, are finding new ways for electricity. Within the illustration, one is able to see how society is going from burning fossil fuels to using the sun. On the right, one can see a factory, and as that factory runs, it puts toxins into the air, killing life around it. Whereas the left side shows the sun, able to keep the life around it healthy while also being able to give off solar energy which will eventually be turned into electricity. Overall, my illustration shows the difference between the two. One destroys the planet, the other is keeping the planet alive.

Jack Nelson

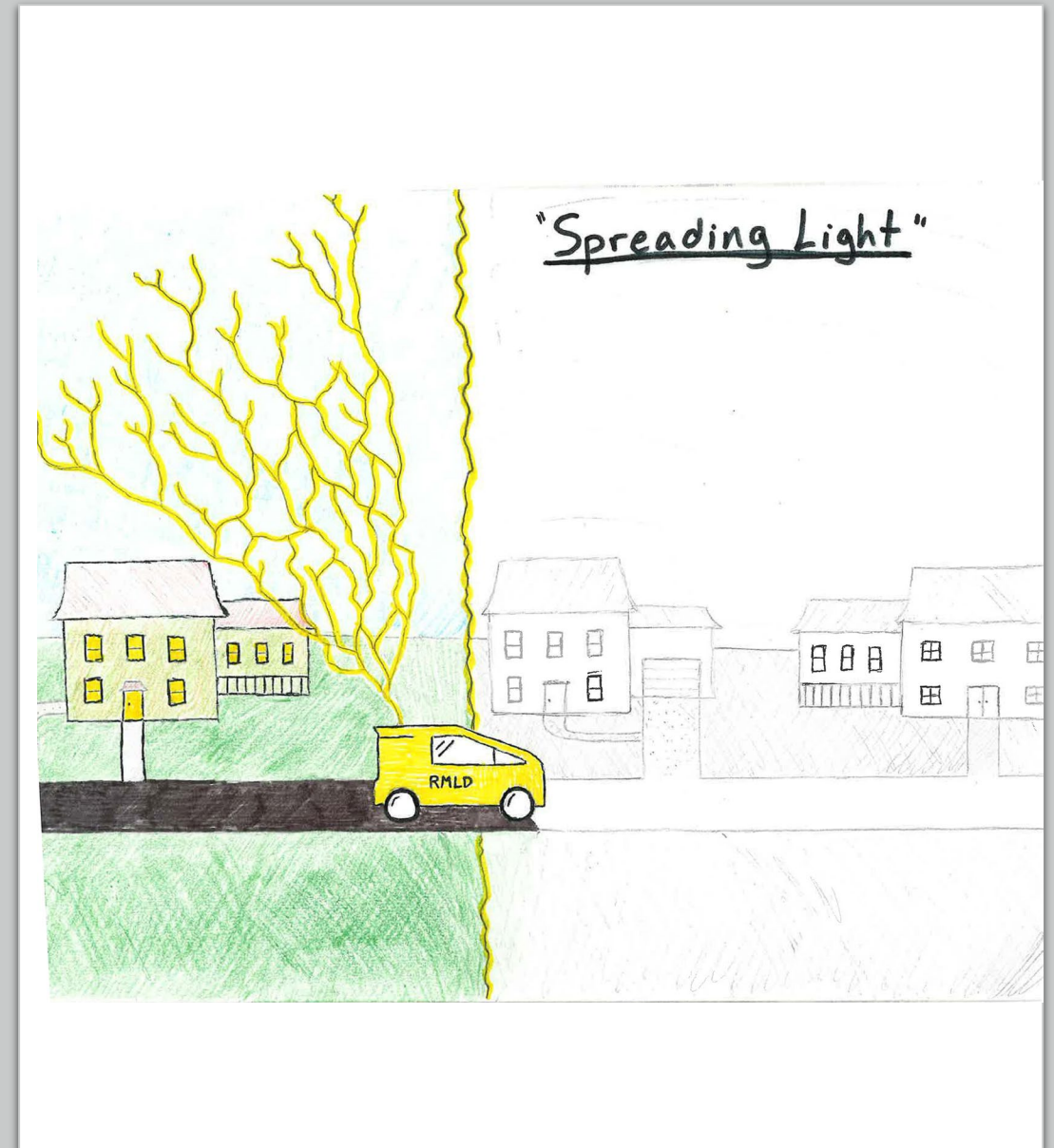
Junior, Reading Memorial High School



Spreading Light

This illustration portrays an RMLD vehicle moving along the streets of Reading and illuminating the houses of the town. Color and lightning bolts are used to convey electricity and light that is being provided to homes by RMLD. This incorporates the concept of trailblazing by portraying RMLD's determination to push through the darkness and illuminate their surroundings.

Danny Henneberry
Junior, Reading Memorial High School



Lions Don't Compare Themselves to Humans

My submission displays somebody who I've always considered a trailblazer, Swedish soccer player Zlatan Ibrahimović. Although it may derive from a sporting context, Zlatan's iconic personality of self belief and determination has led him to some of the most remarkable achievements in the game. I decided to draw him in his national team colors of Sweden, as the yellow and blue are both commonly associated with electricity, and the contrast between the two of them can symbolize the diverse nature of what being a trailblazer means. He is sharp and full of energy, like electric waves and currents themselves. Zlatan's parents came to Sweden as immigrants, and he was seen through a different light his entire life because of that. That didn't stop him from becoming the greatest player in his nation's history, which makes the colors stand for something else as well.

Luke McQueen

Junior, Lynnfield High School



Dame Time

My artwork shows Damian Lillard, a star basketball player of the Portland Trailblazers. The lightbulb is representing the electric part of the prompt. The light bulb is leading Damian Lillard to a new undiscovered place. The sole set of footprints shows that he is the first to take this path, a true trail blazer. Electricity is the thing allowing him to take this alternative, new, path. Thank you

John Goodhue

Junior, Reading Memorial High School

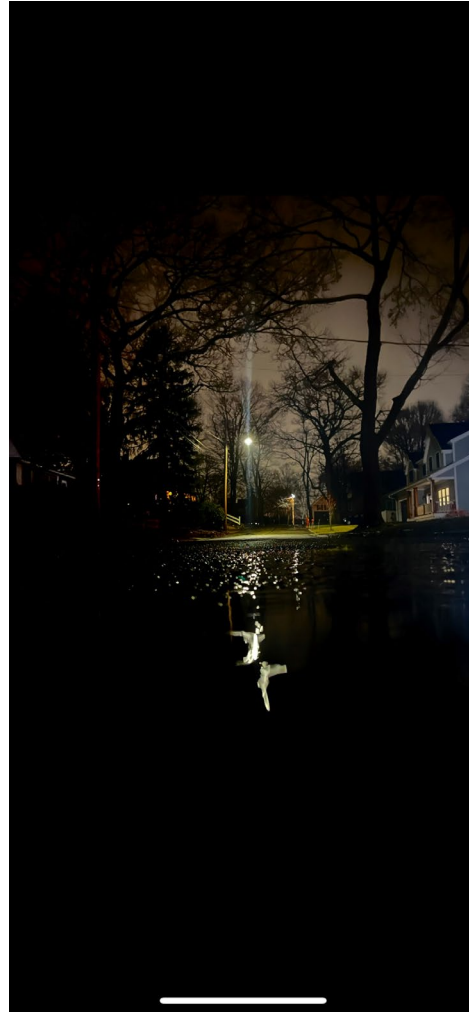


Light in the Dark

This collection is called "Light in the Dark" and it's about how you can always come from the dark and reach towards hope. It's about how even if your starting point is in the dark, you can trailblaze and create your own path to the light. This is why in each of them there is darkness on the bottom and then a light source on top representing the climb and effort it takes to be a trailblazer, and make it to your goal, or the "light."

Emily Goodhue

Junior, Reading Memorial High School



State of Technology

The Tesla Roadster is one of the newest Tesla cars. Tesla was one of the first companies to start creating electric vehicles, which has been continued by other car manufacturers. This will help reduce global warming and climate change by reducing carbon emissions when driving electric vehicles instead of gas-powered cars.

Lucas Bowlin

Freshman, Reading Memorial High School

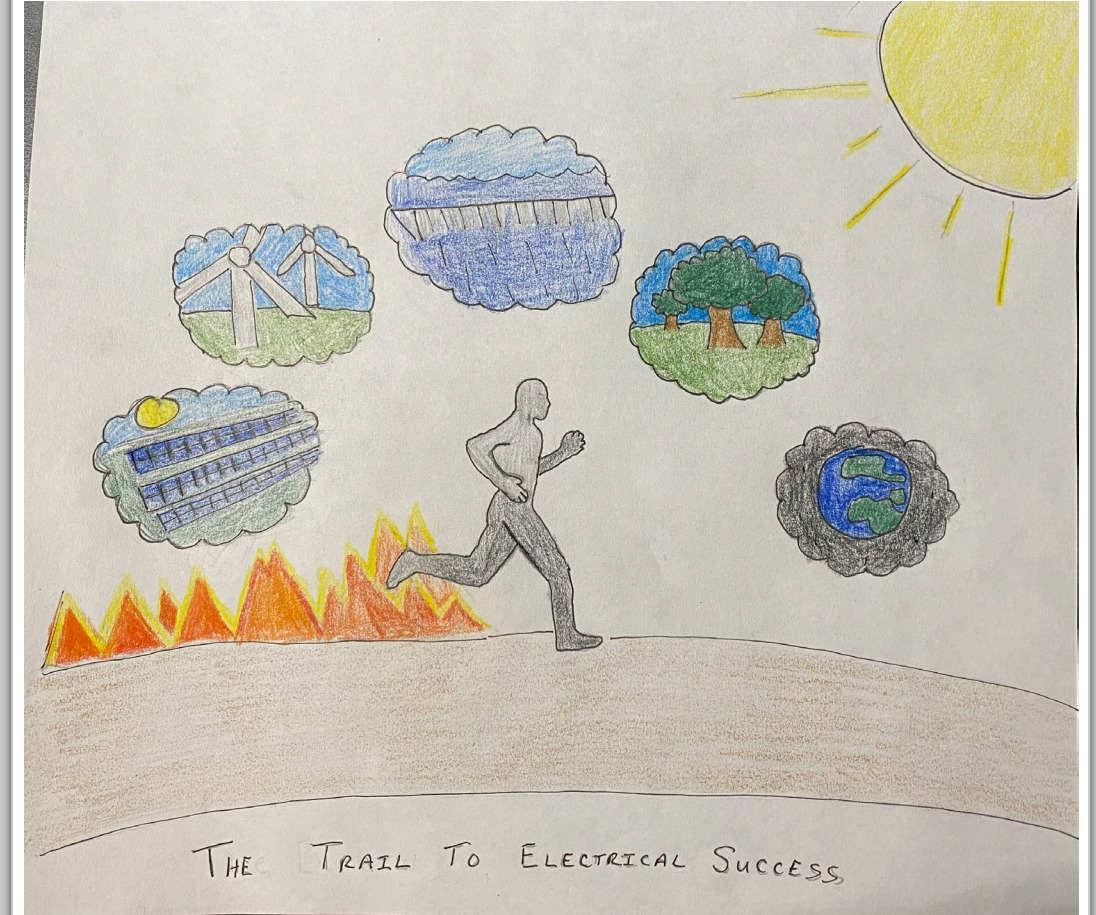


The Trail to Electrical Success

My drawing represents required technological advancements needed to store and produce electricity. These methods are more environmentally friendly alternatives compared to others. These type of solutions need to continue in order to sustain our electric needs in the future.

Kyle Bridge

Freshman, Wilmington High School



Trailblazing in the Modern World

This is the drawing I created with the theme Trailblazing. Since trailblazing means forging a new path and letting others forge a new path as well, I thought of technology and thought of how people were finding new ways to create and use technology. Two of the first things that came to mind were the windmills and the solar panels for wind power and solar energy. These two forms of energy have become really important to our lives today, and I am really happy to draw some of these accomplishments.

Ryan Mulvey

Senior, Reading Memorial High School



Bulb by the Brook

A lightbulb it's enjoying the sound of the brook rushing by. This is an older lightbulb and even though it is now inferior to more current models it is still important. This lightbulb is a trailblazer. It paved the way for the new technology we can enjoy now and though now outdated it was previously the best and most innovative option of the times. This lightbulb made its way through homes, offices, schools, and more letting light into the world. It now sits retired by a brook relaxing knowing that its work is done but it will not be forgotten. This bulb is an innovator and a trailblazer.

Gavin Dong

Freshman, Wilmington High School

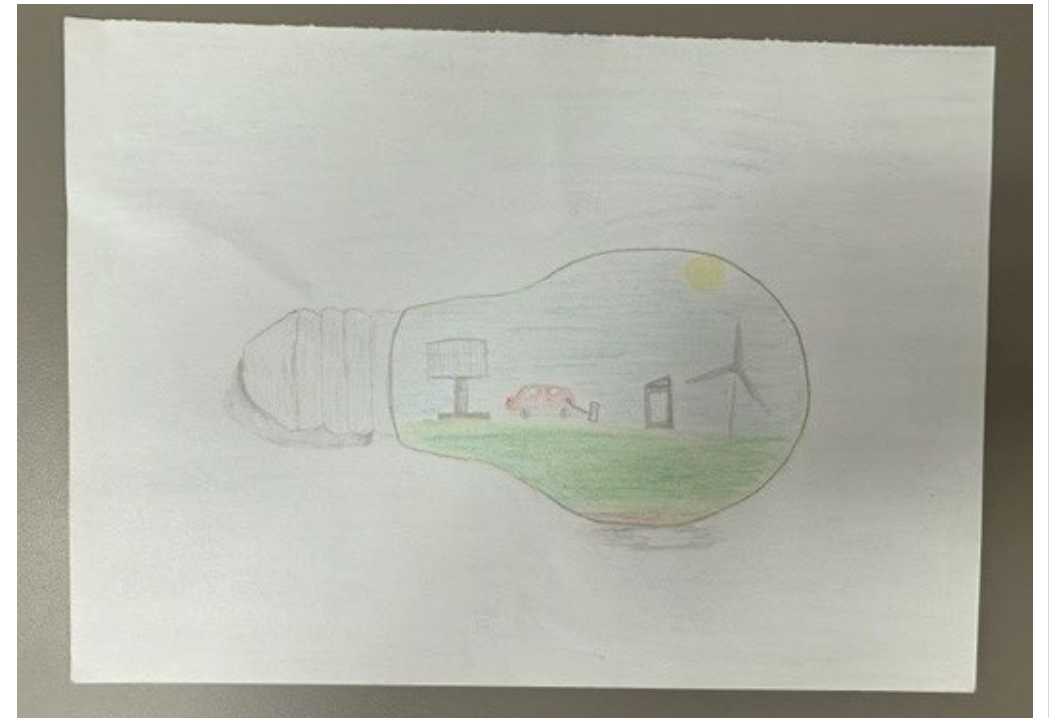


New Ideas of Electricity

This drawing portrays the ideas of trailblazing and electricity. The lightbulb represents new ideas that have been created over the years to decrease the amount of electricity being used that does not harm the environment. Inside the lightbulb are drawings of things such as electric cars, windmills, and solar panels. In the drawing, the battery energy storage system is drawn which was made to help store energy for when it is needed or not needed to help residents save money.

Bridget Patterson

Junior, Reading Memorial High School



A New Green Path

For my submission, I have taken a photograph with my sister acting as the “trailblazer”, treading a new path and being different. I have used the light and technology of my projector to create the image

Carina O’Donnell
Senior, Wilmington High School

